



**BAIDURI DIMENSI**

بيدوري دايمنسي

**YOUR  
PARTNER  
IN LOGISTICS  
EXCELLENCE**



**BAIDURI DIMENSI GROUP**

[www.baiduridimensi.com](http://www.baiduridimensi.com)

**COPYRIGHTED 2018**

# TABLE OF CONTENTS

---

#	TITLE	PAGE
I.	Company Overview	01
II.	Message From Managing Director (MD)	03
III.	Company Milestones	05
IV.	Board of Directors	07
V.	Meet The Team	07
VI.	Operating Company	08
VII.	Services	09
VIII.	Safety Policy	11
IX.	Message From Safety Chairman	12
X.	Safety Board of Directors	13
XI.	Our Works At A Glance	17
XII.	Our Client	18

## MESSAGE FROM MD



Managing Director

**Dato' Sri Haji Moithu Kutti  
bin Mohammad @ Musa  
Mohammad**

SSAP, JP, SK, AK, PJK, CMILT (UK)

Baiduri Dimensi Sdn. Bhd. was incorporated on 13th March 1997 with its principal activity in port operations, stevedoring, warehouse, transportation, freight forwarding, equipment MRO, building construction for various ports in Malaysia.

The management team comprises of a group of professionals highly competent in logistics, operations, human resources, management, marketing and finance discipline. Our vision is to be the most preferred logistics solution provider in Malaysia with highest quality customer service for the supply chain industries.

We aim to provide services at competitive pricing, speed and innovation while ensuring excellence service and total commitment to all our clients.

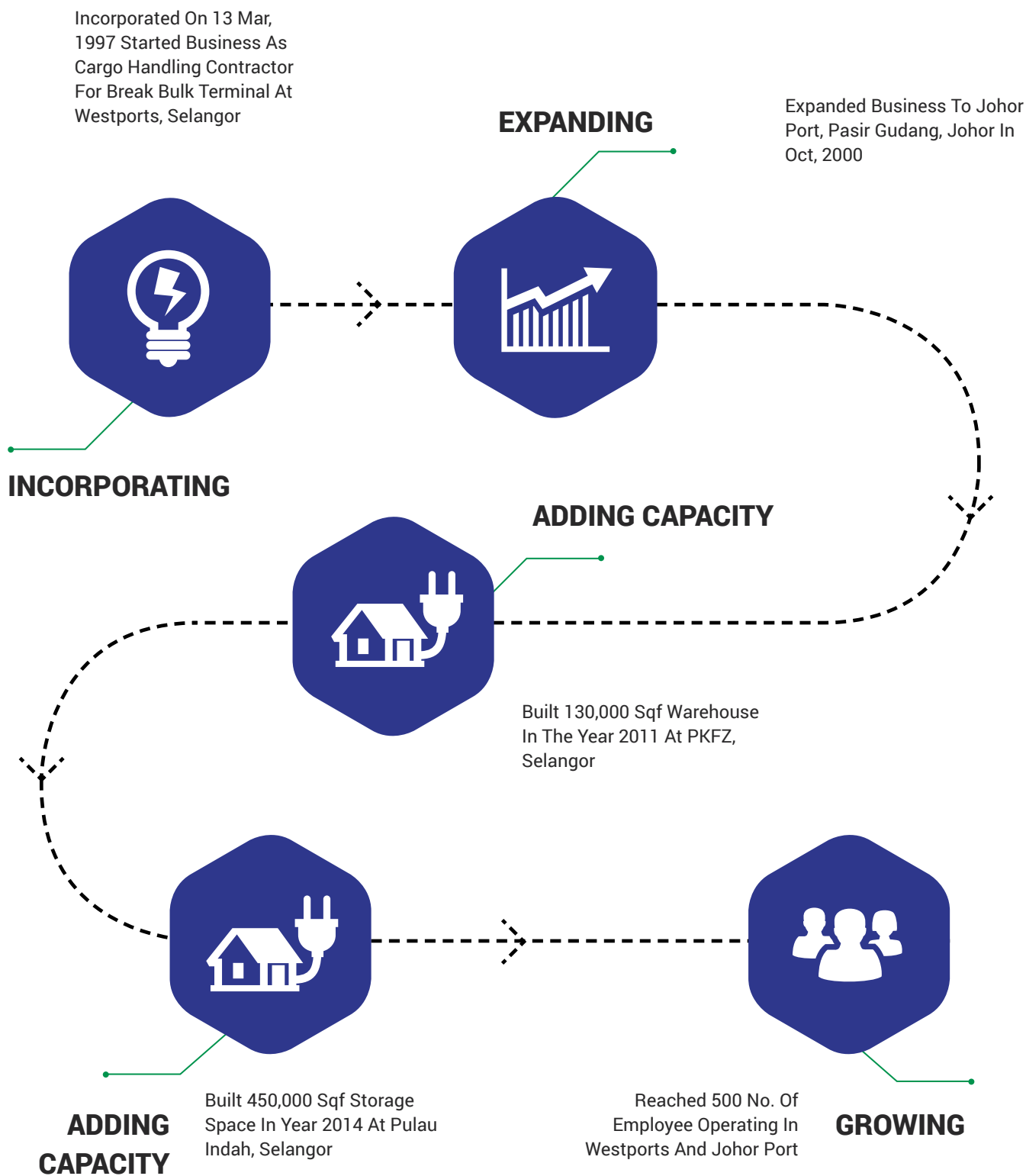
Supported with strong and reliable logistics agent worldwide, we are able to facilitate and meet the logistics needs of importers and exporters inclusive of International freight services covering sea and

Where there is a need for express delivery, our clients can count on us to meet their urgent needs. The organization is rapidly expanding and we are looking for qualified people who share the same passion and determination to join us onboard.

## COMPANY MILESTONES

It started as the demand from customers that sought after to provide a total logistics services to them and we are now fulfilling their requirement to complete the circle as the Total Logistics Provider. The year 2011 has marked the initial stage of our Forwarding and Shipping Division.

Continue Reading >>



Located in PKFZ and surrounding Pulau Indah Industrial area we have a total build-up warehouse area more than 500,000 sq. ft. plus 217,800 sq. ft. of open yard available for our customers to store their cargoes. The warehouses located in PKFZ are certified fitness for LME (London Metal Exchange) cargoes





”  
**OUR WAREHOUSES ARE  
CERTIFIED FITNESS FOR  
LME (LONDON METAL  
EXCHANGE) CARGOES**  
”



# COMPANY OVERVIEW

## ABOUT US

Baiduri Dimensi Sdn. Bhd. a 100% Bumiputera Company was incorporated on 13th. March 1997. In that year, Baiduri Dimensi commenced operations in Westports, as cargo handling contractor for the Conventional Terminal (Break Bulk Section) supplying forklifts and trailers to shuttle steel and other general cargo from wharf side and warehouses.

We pride ourselves on our expertise in developing imaginative and practical solutions, executed by highly skilled professionals and we are committed to provide an excellent service.

## OUR VALUES

At Baiduri Dimensi, our staff is what makes our company shine. We believe our staff is our top asset and our success lies in how well we source, hire and retain the best people. We hire intelligent and motivated experts who take pride in and prioritize developing superior solutions for our clients.

Our culture is built on (and reinforced by) how we hire, promote, train, and reward employees.

- Customer first
- High Integrity
- Safety First
- Continuous Improvement
- Respect individual



**"OUR VISION IS TO BE THE  
MOST PREFERRED LOGISTICS  
SOLUTION PROVIDER IN  
MALAYSIA WITH HIGHEST  
QUALITY CUSTOMER SERVICE  
FOR THE SUPPLY CHAIN  
INDUSTRIES"**

Baiduri Dimensi Sdn Bhd. has a paid-up share capital of RM3,752,066.00. The group's staff strength exceeds 500 personnel. In Westport alone, the company has the largest fleet of Excavators, Shovels, Forklifts, Trailers, Prime Movers and Cargo Lorries. Currently we are the single largest contractor in Westport.

Our pride, **"A Total Supply Chain Management in One Stop Logistics Partner."** Let's keeps things simple. Today is a little more involved, factor in costs, carbon emissions, storage location and methodology, multimodal transport options, distribution hubs and the all- important import/export location, it all starts to get a little complicated.

Refreshingly and reassuringly, although we continue to invest heavily and keep pace with today's technology, spearheading innovative supply chain solutions, we still like to keep things uncomplicated. Baiduri Dimensi excel in Logistics Supply Chain and operates within the group operating substantial contracts with major port in Malaysia namely Westports Malaysia Berhad.

Today this fleet has 58 Prime Movers and about 125 Trailers with 4 units of Side Loaders. At the helm of Baiduri Dimensi's Haulage Flagship is Dato' Sri Hj Musa, a man committed to his goals and the business.

In true Baiduri Dimensi tradition, the Haulage division was launched with all the right elements in place guaranteeing the Baiduri Dimensi service excellence. The Prime Movers and Trailers that are carrying bulk cargoes such as steel and fruits as well as moving containers from North to South of Peninsular Malaysia.

With substantial service contracts received continuously from Westports Malaysia Sdn Bhd, Baiduri Dimensi also has big esteemed customers such as Posco Malaysia Sdn Bhd, Toll Integrated Logistics (M) Sdn Bhd, RS Logistics (M) Sdn Bhd, Pan Malayan Forwarding & Shipping Sdn Bhd, Pantech Corporation Sdn Bhd, One Total Logistics Sdn Bhd, Prelude Gateway Sdn Bhd, Afico Terminal Venture Sdn Bhd, Infinity Logistics & Transport Sdn Bhd, IAS Freight Systems (M) Sdn Bhd, Agroquiver Fruits (M) Sdn Bhd and many more.



#### Best Quotes

A leader is one who knows the way, goes the way, and shows the way.

## OUR MISSION

- Build partnership with ports and port users
- Strive to be recognized as high quality, entrepreneurial and innovative organizationContinuous Improvement
- One-stop service provider in Malaysia.

## CEO / MANAGING DIRECTOR



Armed with an arsenal of over 30 years' experience in the Port & Logistics Industry, Dato' Sri Haji Moithu Kutti Bin Mohammad @ Musa Mohammad, is the most experienced officer in the company. The Founder of Baiduri Dimensi Sdn Bhd and its group, Dato' Sri Haji Musa is a qualified logistician and a member of the Chartered Institute of Logistics and Transportation (CMILT).

As the Group Managing Director of the company, all areas fall under his scrutiny however he is particularly responsible for the operations, marketing and all external affairs of the company.

## BOARD OF DIRECTORS

Each and every one of our employees represent the spirit of our company: driven, committed, and acutely aware of how limitless Baiduri's potential is to grow.



**Roslan Effendi**

Human Resource & Corp. Admin Director

Extensive experience of leading business operations across Asia Pacific in diverse competitive business. Competent in conceptualizing, business plans, strategies, processes and systems to foster organizational excellence.



**Roy Eu Hock Cheng**

Director, Business Development & Operations

Well experienced in port handling, warehouse management, transportation, consultancy services and managing containers depot, he is now entrusted to overseeing of Marketing Department.



**Faizal Abd Rahaman**

Baiduri Dimensi Johor Operations Director

Combining almost more than 15 years of his experiences as Logistician and Business Development, Faizal one of youngest Branch Manager has managed one of biggest branches at Malaysia



## MEET OUR TEAM

Each and every one of our employees represent the spirit of our company: driven, committed, and acutely aware of how limitless Baiduri's potential is to grow. We go to great lengths to identify self-starters with diverse experience and skill sets to produce not just an effective workforce, but a well-rounded, talented and complementary team.



**Abdul Karim B. Mohammad**  
General Manager



**Saravanamuthu Muniandy**  
Head of Finance



**Surendran Rangaya**  
Head Of Haulage



**Faizal Laude**  
Warehouse Division Head



**Vijay Thangaraja**  
Forwarding Manager



**Prusothaman Sundaraju**  
Operations Manager



**Hassan B. Mohammad**  
Equipment MRO Manager



**Muhammad Hafizullah Bin Moithu Kutti**  
Assistant Manager Haulage



**Muhammad Ridhwan Bin Moithu Kutti**  
Senior Executive Port Operations



**Siti Nur Aminah Binti Moithu Kutti**  
Forwarding Executive

# OPERATING COMPANY

Baiduri Dimensi commenced operations during the economic downturn of 1997 and since then, Baiduri Dimensi has sustained its growth over the last 20 years as a multi – common User Service Provider through integrity, quality and excellence.

Built on understanding the customers' needs and intricately harnessing human capital, equipment and financial resources, the group enjoys a turnover of over RM30 millions per annum providing the best possible solution.

”

Refreshingly and reassuringly, although we continue to invest heavily and keep pace with today's technology, spearheading innovative supply chain solutions, we still like to keep things uncomplicated. Baiduri Dimensi excel in Logistics Supply Chain and operates within the group operating substantial contracts with major port in Malaysia namely Westports Malaysia Berhad.





## BAIDURI DIMENSI JOHOR



بیدوری دیمینسی جوهر (م) سندیریان برحد  
BAIDURI DIMENSI JOHOR (M) SDN BHD

Baiduri Dimensi Johor (M) Sdn Bhd commenced operations in October 2001 when the company successfully secured the contract to supply manpower and equipment for handling bulk cargo in Johor Port, Pasir Gudang. Baiduri Dimensi Johor (M) Sdn Bhd has a paid-up share capital of RM500,100.00 and its staff strength exceeds 150 personnel.

At the key personnel driving the business of Baiduri Dimensi Johor (M) Sdn Bhd in Pasir Gudang is Mohd Faizal Abd Rahaman as Operations Director. He is the main operations and customer liaison.

Due to market pressure and customer demand, Baiduri Dimensi Johor (M) Sdn Bhd has launched its container haulage division. In March 2006 the division introduced 7 Prime Movers and 50 trailers that are carrying bulk and general cargoes moving containers from North to South of Peninsular Malaysia. It was launched with all the right elements in place guaranteeing the Baiduri Dimensi Johor (M) Sdn Bhd service excellence.

Recently Baiduri Dimensi Johor has been awarded two contracts by MSM Sugar Refinery (Johor) Sdn Bhd and TLP Terminal Sdn Bhd at Tanjung Langsat Port to supply manpower and equipment.

Meanwhile in haulage services among main customers such as Perkapalan GML Sdn Bhd, Two East Movers Sdn Bhd, All Cosmos Industries Sdn Bhd and Asia Flex Products Sdn Bhd and many more.

## EVERGREEN EDITION SDN BHD



EVERGREEN EDITION

Evergreen Edition Sdn Bhd was incorporated in 27th April 2007 as Investment Company. Its office is located at Westport, Pulau Indah. Evergreen Edition has a paid up capital of RM1, 000,000.00 and it is the major shareholder to Zetavest Sdn Bhd.

Recently, Evergreen Edition has leased 14.3 acres of prime land from PKFZ to develop covered warehouse and multi-purpose open yard to cater for Halal-Hub business. Targeted by 2 years from now the development can be completed, it can create the demand for potential customer to bring in their cargo inside PKFZ.



# ZETAVEST SDN BHD

## OVERVIEW



# ZETAVEST

Zetavest was established in 1992 and began its first handling operations as a port labour supplier (stevedores), when Westport berthed its first shipment MV.ZENO at break bulk terminal on 2nd November 1994.

Until today Zetavest still active and continuously servicing Westport to cater the growing demand in shipping industry that required modernized handling and a minimum berth stay. With these new requirements, Zetavest has set the berth productivity as their core objective to fulfill its customers, shipping lines and the port needs.

In order to achieve high efficiency rate Zetavest is fully committed on dock labors or stevedores to attain fast turn-round of ships and good utilization of berth. This approach in turn, encourages trade in this region and improves the competitiveness of Westport.

## RANGE OF SERVICES

Labour Services – vast experience and expertise on handling various types of break bulk products. Handling methods on cargo is crucial and important in order to maintain cargo safeness.

- Supply of dock workers / gangs for ship loading and unloading operations. They are called as winch man, hatch man, wharf man and deck man
- Technical workers like Chief Foreman and normal Foreman
- General and skillful workers for warehouse or transit shed, handling cargo, stacking cargo, stuffing and unstuffing and value added activities such as labelling, repacking, rearranging and assembling cargo
- Handling of machineries, project cargo and heavy lift

Gears Supply – Provide all type of gears and equipment for cargo handling including special design gears for ship operations and warehouse, gears for heavy lift, machineries and handling containers. Type of gears such as rope sling, wire sling, spreader sling, chain sling, shackles webbing sling and many more

Zetavest has set the berth productivity as their core objective to fulfill its customers, shipping lines and the port needs.

## SKILLFUL WORKERS AND TYPES OF PRODUCTS HANDLED BY ZETAVEST

Zetavest workers have vast experience and expertise on handling various types of break bulk products. Handling methods on cargo is crucial and important in order to maintain cargo careness. Zetavest workers have expertise and qualities on handling following types of cargo:

### TYPES OF STEEL PRODUCTS

---

- \* Primary products
  - Scrap iron
  - Hot Briquette iron (HBI)
  - Pig Iron
  - Billet
  - Slabs
  - \* Rolling and finished products
  - Hot Rolled Coil
  - Cold Rolled Coils
- \* Secondary products
  - a) Nails Rolled Coil
  - b) Tubes, pipes, painted steel, bolt & nuts
  - c) Pipes fittings, tin plate formed sheets.

### TYPES OF GENERAL CARGO

---

- All type of palletized or unitized cargo: i.e. rubber, tiles, MDF board
- Gypsum board, panel, doors, packages,
- All types of Bags cargoes (25kg, 50kgs) and jumbo bags.
- Timber (in bundles), project cargo, machineries and steel structure
- All types of General cargo. (In form of break bulk / loose cargo)





# OUR SERVICES

Supported with strong and reliable logistics agent worldwide, we are able to facilitate and meet the logistics needs of importers and exporters inclusive of International freight services covering sea and air freight, road transportation, customs brokerage and container haulage services.





# HAULAGE SERVICES

---

## OVERVIEW

Baiduri Dimensi Sdn Bhd offers an extensive network in land transportation with its fleet over 50 Prime Movers and 300 trailers. Covering its major movement through its offices at both Westports and Johor Port. Seamless online GPS tracking ensures efficient delivery and collection and customer satisfaction to monitor every shipment of theirs. Baiduri Dimensi Johor Sdn Bhd and Baiduri Dimensi Sdn Bhd incorporated in 1997 and ever since never failed to show rapid growth in providing customers satisfaction and preferred haulage company.

We efficiently manage large volumes of containerized movement, cater for local and outstation movements

## SITES INCLUDE:

- Prime Movers
- Side Loaders
- Trailers
- Tipper Trucks
- Stackers

## TRANSPORTATION HAULAGE FACILITIES:

- 50 Units of Prime Movers. A fleet of Scania & Volvo Prime Movers for Container Haulage Trucking
- A various fleet of Scania, Volvo, Hino, Fuso for Internal Trucking
- 6 Units of Tipper Trailer 20 footer size
- 3 Units of Side Loader
- Semi-skeletal container trailer (20 footer & 40 footer)
- 1 Unit of 22 Tons Box Truck for fruits Special Lorry Equipment for Project Cargo (Low Loader, Flat Bed Lorry etc.)
- 5 Units of 3 Tons Lorries and 2 Units of 1 Tons Lorries
- Haulage Yard for Container Storage / Stuffing / Unstuffing Space with high security

# WAREHOUSING SERVICES



## OVERVIEW

Baiduri Dimensi Sdn Bhd warehouses located in PKFZ, Westports, Pulau Indah and Perigi Nenas, Pulau Indah consisting approximately 600,000 sq ft facilities provides a full range of warehousing services and added value activities for various customers with various commodities such as ferrous & non-ferrous metals, bulk commodities, agricultural products and also bulk commodities such as zircon sand and fertilizer.

## WAREHOUSES LOCATION AND SIZE

### Port Klang Free Zone (PKFZ) Warehouses

- BD 1 (150,000 sq. ft.)
- BD 2 (150,000 sq. ft.)
- BD 3 (140,000 sq. ft.)

### Own Distribution Centre Property

- BD 6 (60,000 sq. ft.) Jalan Perigi Nanas Pulau Indah Port Klang Distribution Centre

### Westport Storage Area

- BD 7 (217, 800 sq. ft.) open yard in Westports

Our warehousing services are comprehensive include weighing, sampling activity, packing, blending & labelling along with container stuffing, stripping and various handling activities.

## SPECIALIZE WAREHOUSING

Baiduri Dimensi Sdn Bhd warehouse in PKFZ is one of the licenced warehouse to store London Metal Exchange (LME) metals. These are non-ferrous metals such as nickel, copper, zinc, lead, aluminium, aluminium alloy and tin.

Under the lead of our client, we handled various types of non-ferrous metal in and out of Malaysia and have been involved in this business activity since early 2014. This specialize warehouse activities deals with receiving, lotting, weighing and warranting LME cargo for the metal exchange.



### Storage and handling

We receive, securely store, and manage customer-owned inventories in our warehouse and prepare required Inventory report as per customer requirement.



### Inventory Management and Stock Monitoring

Inventory Management and Stock Monitoring Services to our clients by recording, updating and watching over stored cargoes and report the inventory status within the required time-frame



### Pick and packing

We will prepare, consolidate and securely pack cargo as per customer request.



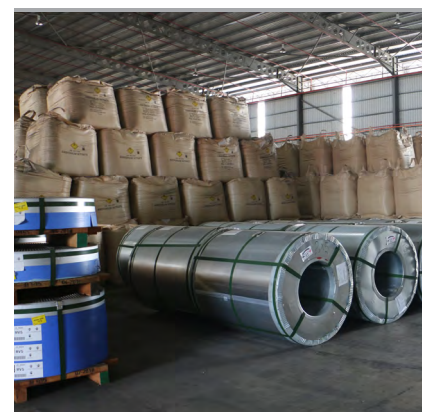
### Distribution

We manage and coordinate transportation processes for inbound and outbound shipments to ensure that cargo are moved in the most efficient manner.



### Coordination

We will manage supply chains: scheduling, coordinating, monitoring of material flow.



### Added Value Services

A wide range of value added services which includes but not limited to container fumigation, certified weighing, reconditioning of damaged goods, cleaning, blending, brushing, packing, re-bagging and palletizing services.



# PORT OPERATIONS SERVICES



## OVERVIEW

Port Operations services was in operation since 1997 in Westport, as cargo handling contractor for the Conventional Terminal (Break Bulk Section) supplying forklifts and trailers to shuttle steel and other general cargo from wharf side and warehouses.

The department staff strength exceeds 300 personnel for both at Westport. We have the largest fleet of Excavators, Shovels, Forklifts, Trailers, Prime Movers and Cargo Lorries thus it makes us the single largest contractor in Westport. Our range of capital good invested are as below:



**25 UNITS**  
3 TO 4 TONS FORK LIFT



**10 UNITS**  
7 TONS FORK LIFT



**15 UNITS**  
10 TONS FORK LIFT



**6 UNITS**  
18 TONS FORK LIFT



**7 UNITS**  
25 TONS FORK LIFT



**2 UNITS**  
32 TONS FORK LIFT



**3 UNITS**  
35 TONS STACKER LADEN



**1 UNITS**  
42 TONS STACKER LADEN



**15 UNITS**  
SHOVEL FOR PORTS  
BUSINESSES



**28 UNITS**  
EXCAVATOR FOR PORTS  
BUSINESSES

Various types of gears for special equipment such of Spreader Bar, Hooks, Wires, Slings, Webbing Slings, Clipper, Grabber, Hopper, Ramp, Tray, Chain Slings and many more.

# STEVEDORING SERVICES



## OVERVIEW

We are appointed contactor of Westport Malaysia Sdn Bhd to perform stevedoring work for the following shipping agents such as MK Maritime, Ben Line Agencies Malaysia Sdn Bhd, AM Maritime Sdn Bhd, Sunship (M) Sdn Bhd, Aquamaritime Logistics Sdn Bhd, TSM Forwarding Sdn Bhd and many more. Strategy and innovation capability creates value by finding smarter ways to manage end-to-end relationships, product movements and information flows through to their end customers.

Zetavest Sdn Bhd provides a range of stevedores and cargo handling management. We manage large volumes of product and several sizes of cargoes and accommodate customer overflow requirements.

## OPERATIONAL SITES INCLUDE:



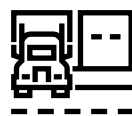
Manage Bulk Vessel on discharging Sugar, Soy beans, Clay and etc.



Container Operations on loading and discharging OOG & UC cargo.



Manage and supply gears/equipment as well as work on 24/7 base on shift requirements.



Conventional operations on loading and discharging steel products, project cargoes and general cargoes.



## FORWARDING SERVICES

Awareness of the customs regulations is critical for smooth door-to-door global transportation. Baiduri Dimensi Sdn Bhd are Licensed Custom Broker registered with Royal Malaysian Customs Department. We provide swift and precise customs clearance services.

Our base of operations is located at a strategically excellent location with trained and dedicated staff to handles shipments from point of receive Job Order till clearance. The staff are equipped with knowledge to assist and provide guidance concerning your shipments. We provide continuous updated information on the status of shipment and experienced people that will assist and guide you through all customs matters. Other services entail terminal services, lashing and securing, transport services and export packing.

### We execute the following services of custom clearance for our valuable clients:



Guidance and consultancy on pre and post shipment services and all the documentation procedures.



Liaison and follow up with various Governmental organizations and all post shipment formalities and endorsements.



Ocean Freight services for both Less-Than-Container Load (LCL) and Full-Container Load (FCL) shipments.

In order to make sure your logistic process never ceases to run smoothly, our supply chain management team efficiently orchestrates and optimizes your journey. 24/7, real time and with focus on sustainability.



- K1 (Import Shipments)
- K2 (Export Shipments)
- K3 (Export to East Malaysia)
- K8 (Import to PKFZ and "Terminal Transfer")
- ZB1 (Import without duty to PKFZ)
- ZB2 (Export without duty from PKFZ)
- ZB4 ( Value Adding – Original Goods to Finished Goods)



## HEAVY EQUIPMENT MRO SERVICES

---



Our reputation for excellent service is the direct result of our dedicated professionals whose goal is to deliver high quality service to each customer.

Baiduri Dimensi MRO services, building lasting customer relationships founded on honest and quality service is the foundation of our business. We develop trust among our internal stakeholders through our extensive experience and comprehensive knowledge of heavy equipment, truck and trailer repair. We understand the importance of keeping your equipment on the road and aim to provide prompt and courteous service.

Baiduri Dimensi MRO services is committed to providing the highest standards of service through the use of highly trained professionals, innovative equipment, and logistical technology. We offer competitive labour rates, quicker turnaround time, higher quality repairs, and more superior customer service than major truck dealership service departments.

Baiduri Dimensi MRO services understands the importance of keeping your equipment on the road and guarantees that every problem will be repaired as quickly as possible and done right the first time, helping you get back on the road safely and quickly.

---

**YOUR PARTNER  
IN LOGISTICS  
EXCELLENCE**





A photograph of three men in a warehouse setting. They are wearing yellow hard hats, safety glasses, and high-visibility yellow vests over light blue shirts. The man on the left is holding a black folder. They are looking towards the left side of the frame. In the background, there are large stacks of metal coils and a yellow Hyster forklift. The scene is brightly lit.

## SAFETY POLICY

**Proactive measures to identify, assess all potential hazard and implement risk control.**

In line with BAIDURI DIMENSI GROUP shall be the most preferred logistics solution provider in Malaysia with highest quality customer service for the supply chain industries. The group mission is to build partnership with ports and port users, strive to be recognized as high quality, entrepreneurial and innovative organization and one-stop service provider in Malaysia.

BAIDURI DIMENSI GROUP is committed to provide a safe workplace by enforcing safe and healthy work environment for all stakeholders.

”



## MESSAGE FROM SAFETY CHAIRMAN



Safety & Health Chairman  
**Dato' Sri Haji Moithu Kutti  
 bin Mohammad @ Musa  
 Mohammad**

SSAP, JP, SK, AK, PJK, CMILT (UK)

Ever since its establishment in 1994, the Baiduri Dimensi Group has strived to maintain high ethical standards, create products and services that provide value to our customers, and become a company trusted and chosen by all of its stakeholders, including customers, under the theme of “Your Partner in Logistics Excellence”. The Baiduri Dimensi Group is currently focusing on leveraging its strengths in corporate culture and system automation by offering end to end supply chain solution in Malaysia with highest quality service.

Through these business activities, Baiduri Dimensi remains committed to collaborating closely with each and every one of its stakeholders to create a “Safety First” environment based on our corporate value that helps ensure security, safety, efficiency and fairness, enabling people to live more abundant lives.

Going forward, we will aim to establish a corporate culture in which every member of the Baiduri Dimensi Group possesses the spirit of self-help and takes initiative in carefully assessing societal and customer expectations, considering what can be done to meet these expectations, taking appropriate action, and providing value, as well as to build stronger relationships of trust with all of our stakeholders. We look forward to your continued support and patronage.

## SAFETY & HEALTH COMMITTEE



**Dato' Sri Haji Moithu Kutti**  
 Safety & Health Chairman



**Roslan Effendi**  
 Vice Chairman



**Nur Salshabila**  
 Safety Officer

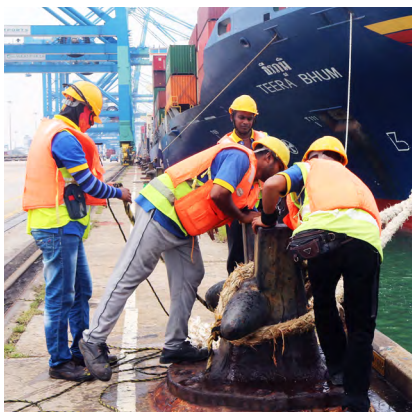
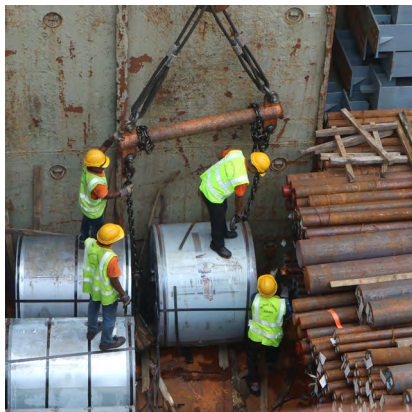




# OUR WORKS AT A GLANCE







# OUR CLIENTELE

With substantial service contracts received continuously from Westports Malaysia Sdn Bhd, Baiduri Dimensi also has big esteemed customers such as Posco Malaysia Sdn Bhd, Toll Integrated Logistics (M) Sdn Bhd, RS Logistics (M) Sdn Bhd, Pan Malayan Forwarding & Shipping Sdn Bhd, Pantech Corporation Sdn Bhd, One Total Logistics Sdn Bhd, Prelude Gateway Sdn Bhd, Afico Terminal Venture Sdn Bhd, Infinity Logistics & Transport Sdn Bhd, IAS Freight Systems (M) Sdn Bhd, Agroquiver Fruits (M) Sdn Bhd and many more.



**Tanjung Langsat Port**



**Westports**



**Johor Port**



**JP Logistics**



**IAS Freight Systems(M)  
Sdn. Bhd**



**Jasa Export Freight  
Forwarding Sdn. Bhd**



**Paintech Group Holdings  
Berhad**



**Prelude Gateway Sdn. Bhd**



**Solmax Bio Energy**





# BAIDURI DIMENSI GROUP OF COMPANIES

## Headquarters Office

Lorong Cempaka,  
West Port Pulau Indah, 42920  
Port Klang, Selangor Darul Ehsan,  
Malaysia.  
+603 - 3101 5967

## Yard Office

Lot 45 & 46, Jalan Perigi Nanas  
8/7, Taman Perindustrian Pulau  
Indah, Fasa 1, 42920 Port Klang,  
Selangor Darul Ehsan, Malaysia.  
+603 - 3101 3096

## Southern Yard

PLO 449, Jalan Suasa, Kawasan  
Perindustrian Pasir Gudang,  
81700, Pasir Gudang,  
Johor Darul Takzim, Malaysia  
+607 - 256 1761



[www.baiduridimensi.com](http://www.baiduridimensi.com)